

AMP-TWIST SL Jacks

World Class Shielded Connector Technology for Cat.6/6_A and Cat. 7/7_A



Outstanding Performance

AMP-TWIST 7_{AS} is ready for 40 Gigabit Ethernet
AMP-TWIST 6_{AS} complies with the upcoming ISO/IEC 11801 Cat6_A



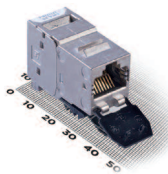
Quick Termination

Less than 1 min. for AMP-TWIST 6_S & 6_{AS}
Less than 1.5 min. for AMP-TWIST 7_{AS}



Only One Tool

For all jacks, for all termination steps



Shortest Connectors

Shortest Cat. 6_A and Cat. 7_A connectors on the market



3rd Party Certified

Tested by independent test lab



25 Year Warranty

AMP NETCONNECT guarantees system performance for 25 years

AMP-TWIST SL Jacks - Feature & Performance Overview

	AMP-TWIST 6S	AMP-TWIST 6AS	AMP-TWIST 7AS
 Automatic Screen Termination (Toolless)	✓	✓	✓
 360° Screen Contact	✓	✓	✓
 Automatic Wire Cutting (AWC)	✓	✓	✓
 Strain Relief by Design	✓	✓	✓
 Reusable	✓	✓	✓
 Termination Time	< 1 min	< 1 min	< 1.5 min
 Length	37.0 mm	32.0 mm	36.5 mm
 Integrated Dust Cover	✓	✓	✓

AMP-TWIST SL Jacks - Performance

	AMP-TWIST 6S	AMP-TWIST 6AS	AMP-TWIST 7AS
ISO 11801 2 nd Ed. 2002, Cat. 6 component	✓	✓	✓
EN 50173: 2002, Cat. 6 component	✓	✓	✓
TIA 568-B.2.1, Cat. 6 component	✓	✓	✓
ISO 11801 2 nd Ed., Draft Amd. 2, Cat. 6 _A component	✗	✓	✓
EN 50173, Draft Amd. 2, Cat. 6 _A component	✗	✓	✓
TIA 568-B.2.10, Cat. 6 _A component	✗	✓	✓
ISO 11801 2 nd Ed. 2002, Cat. 7 component	N.A.	N.A.	✓
EN 50173: 2002, Cat. 7 component	N.A.	N.A.	✓
ISO 11801 2 nd Ed., Draft Amd. 2, Cat. 7 _A component	N.A.	N.A.	✓
EN 50173, Draft Amd. 2, Cat. 7 _A component	N.A.	N.A.	✓

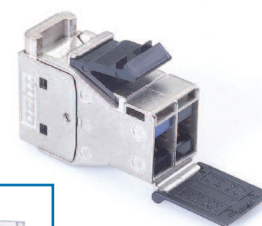
AMP-TWIST 7_AS SL Jack

Product Facts:

- 4 chamber connector, fully compatible with IEC 61076-3-104 Ed. 2, 1000 MHz
- Category 7_A as per ISO/IEC 11801 draft amendment 2
- Quick Termination (< 1.5 minutes) using Tyco Electronics' AWC technology
- Detailed features are listed in the technical overview on page 2

Description	Part Number
Cat. 7 _A die-cast Jack with dust cover, 180° cable exit	0-1711441-1
Cat. 7 _A die-cast Jack without dust cover, 180° cable exit	0-1711437-1
Colored dust cover (bag of 50 pieces)	1-1711481-X

-X	Color
-6	blue
-7	red
-8	yellow
-9	green



AMP-TWIST 6_AS SL Jack

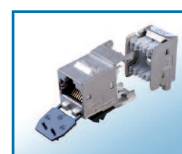
Product Facts:

- Category 6_A as per ISO/IEC 11801 draft amendment 2
- Quick Termination (< 1 minute) using Tyco Electronics' AWC technology
- Detailed features are listed in the technical overview on page 2



Description	Part Number
Cat. 6 _A die-cast Jack with dust cover, 180° cable exit	0-1711592-1
Cat. 6 _A die-cast Jack without dust cover, 180° cable exit	0-1711716-1
Colored dust cover (bag of 50 pieces)	1-1711691-X

-X	Color
-6	blue
-7	red
-8	green
-9	yellow



AMP-TWIST 6S SL Jack

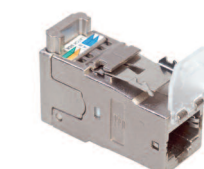
Product Facts:

- Category 6 as per ISO/IEC 11801
- Class E_A as per ISO/IEC 11801 draft amendment 1
- Quick Termination (< 1 minute) using Tyco Electronics' AWC technology
- Detailed features are listed in the technical overview on page 2



Description	Part Number
Cat. 6 die-cast Jack with dust cover, 180° cable exit	0-1711160-1
Cat. 6 die-cast Jack without dust cover, 180° cable exit	0-1711342-1
Cat. 6 die-cast Jack with dust cover, 90° cable exit	0-1711295-1
Cat. 6 die-cast Jack without dust cover, 90° cable exit	0-1711343-1
DIN Rail Adaptor Kit incl. 1 Jack (with dust cover, 180° exit) and 2 cable ties	0-1711501-1
DIN Rail adapter covers (left and right)	0-1711658-2
Colored dust cover (bag of 50 pieces)	1-1711511-X

-X	Color
-6	blue
-7	red
-8	green
-9	yellow

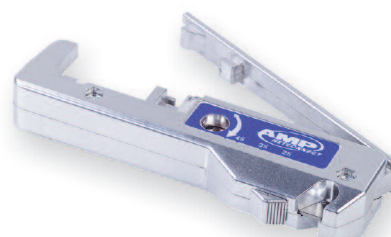


Field Termination Tool for AMP-TWIST SL Jacks

Product Facts:

- Strips cable, marks foil and terminates
- Maintains twisted pair integrity
- Ensures reliable and reproduceable termination quality
- Time and cost saving

Description	Part Number
Tool Kit for AMP-TWIST SL Jacks	0-1725150-3

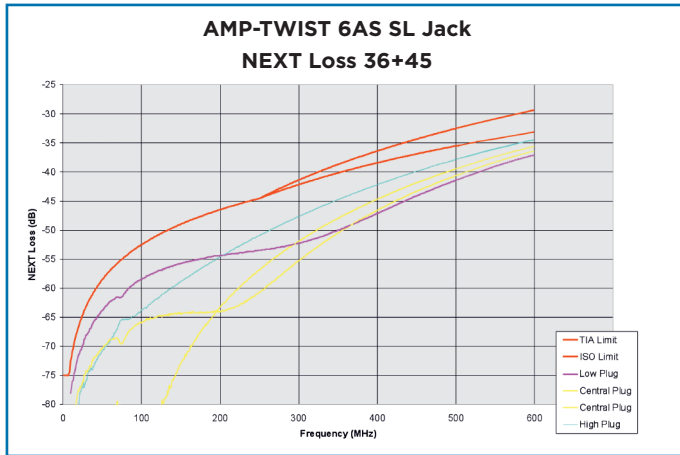


AMP NETCONNECT – Leading Connector Technology

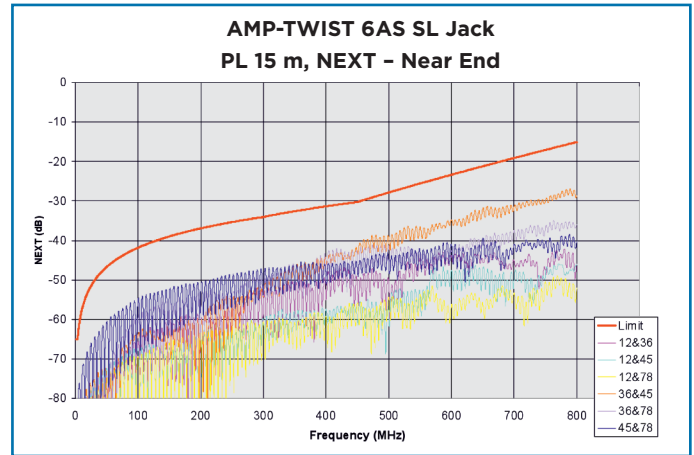
AMP-TWIST 6_AS:

A 600 MHz RJ45 gives an 800 MHz Permanent Link

The new AMP-TWIST 6_AS from Tyco Electronics combines quick & easy termination with superior performance. AMP-TWIST 6_AS is the next generation RJ45 connecting hardware and is fully compliant with the newest component specification of the upcoming ISO 11801 Amendment 2 (validation expected by end of 2009). And it even gives much more than that. Tyco Electronics' engineers have achieved a technology jump which pushes the "physical limitation" of an RJ45 connector to much higher frequency performance, exceeding the ISO standard specification by far.



AMP-TWIST 6_AS connector performance up to 600 MHz

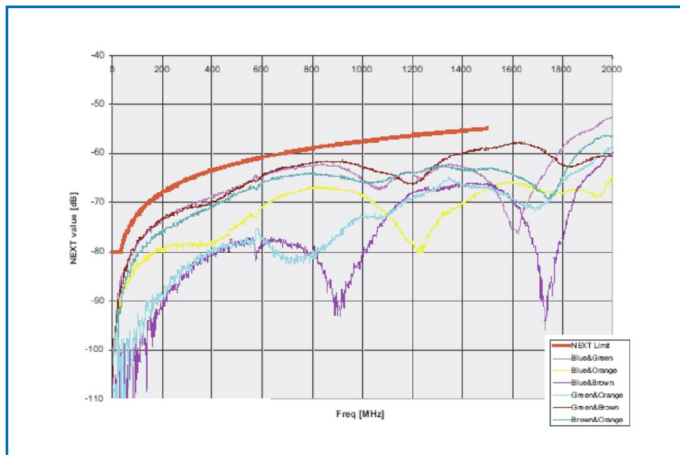


AMP NETCONNECT XG_A System permanent link performance up to 800 MHz using AMP-TWIST 6_AS SL Jack

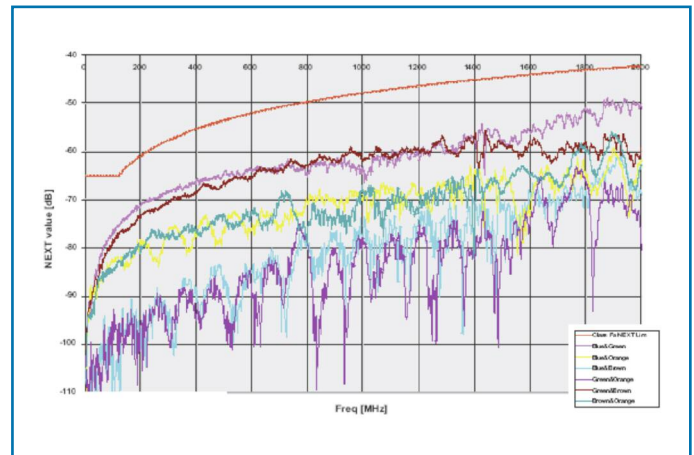
AMP-TWIST 7_AS:

A 1500 MHz Cat. 7_A connector is ready for 40 Gb/s and more

The AMP-TWIST 7_AS is a high performance Cat. 7_A connector in accordance with IEC 61076-3-104 Ed. 2. The 4-chamber concept of AMP-TWIST 7_AS has been optimized to reach a 50% better component performance and 100% better system performance as currently specified in the international cabling standards for a Cat. 7_A connector and a Class F_A system respectively. Independent fundamental technology research has proved that a Class F_A system performance is capable of running possible future 40 Gb/s applications. AMP-TWIST 7_AS with its huge headroom means future proofing.



AMP-TWIST 7_AS connector performance up to 1500 MHz



AMP NETCONNECT Class F_A permanent link performance up to 2000 MHz using AMP-TWIST 7_AS SL Jack

